



With vast experience in the shipping industry, **PL Shipping Co.** chooses **SeeMBox-V©** bringing them to the forefront of the digital era.

## SeeMBox-V© Open Digital Platform Deployment

### Business challenge

Dedicated to management excellence and continuous improvement, through IoT and digital technologies PL Shipping Co. decides to advance their business model and execute a more effective business management to make informed and calculated decisions about its assets.

Through SeeMBox-V© Remote Performance Monitoring Technology, PL Shipping Co. creates a winning edge for their business by joining SetelHellas' commitment for a sustainable business environment of advanced maritime solutions and technology leadership, to minimize environmental footprint and maximize vessel efficiency.

### Scope of work

SeeMBox-V© was deployed for real time acquisition of the navigation system, the Alarm Monitoring system (AMS) and the fuel oil consumption directly from installed mass flow meters onboard. Moreover, the operational performance assistance (OPA) module's addition to the project scope provided the seamless integration of power and RPM data from the onboard torque meter system. The SeeMBox-V© MRV module, the dynamic energy and emissions management solution, was chosen to simplify EU MRV compliance and to provide smooth and hassle-free emission reporting.

### Vessel Details (1<sup>st</sup> vessel fitted)

Vessel's name: ASSIMINA II

Date delivered: June 2007

Builder: Shanghai Guan Shipyard - China

Flag: Liberia

Type of Vessel: Bulk Carrier

GRT/DWT: 19971 MT/ 10477 MT

Speed range: 10 - 14.2 kn

### Resources Employed

Signal acquisition units	2 sets
SeeMBox-V© onboard server	1
Installation completion	3 days
Engineers attending	2 engineers

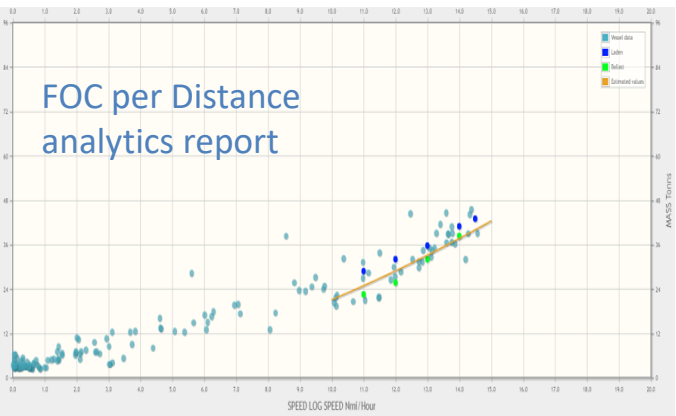
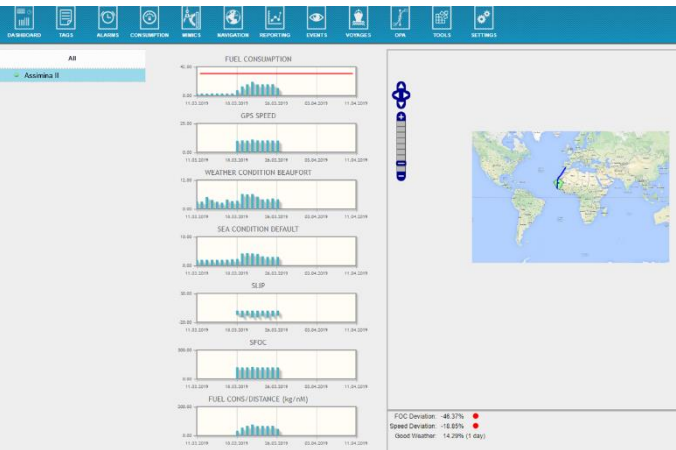


# SeeMBox-V© Open Digital Platform Deployment

## Methodology

Having real time data from the vessel, actual speed and consumption, Shaft Power, RPM and the ability of SeeMBox-V© to deliver immediate analysis through comprehensive reports, provided the company with case data to identify improvements in the vessel's performance and energy efficiency. Combining also the advantage of the solution to integrate additional modules to facilitate any upgrade at a later stage, the decision was made to proceed with the adaptation to a fleet wide scale.

Sample screenshot illustrating SeeMBox-V© Executive Dashboard visualizing real time Average Performance Metrics.



“SeeMBox-V© provided PL Shipping Co. with a valuable tool to find new areas of improving vessel performance and efficiency that reduced the Energy Efficiency Operating Index by 10%. Moreover, the ability of access to the vessel’s AMS console in real time, provided in several cases efficient troubleshooting and swift fault resolution with minimum operational downtime”

Emmanuel Kafouros –  
Technical Manager PL Shipping Co.

## Summary

Beyond smart graphs and seamless data transfer, SeeMBox-V© provides PL Shipping Co. a business management platform to assist in pre-emptive actions, maintenance planning, as well as, to optimize the vessel's performance, operation and energy efficiency. This allows operating the fleet at lower fuel and maintenance cost, while improving crew, cargo safety, productivity and environmental sustainability.

Obtaining value from the combination of physical and digital information, SetelHellas products and services enable maritime organizations and their asset driven business to expand the possibilities for competitive advantage and reach their full potential through digital innovation, diversification and differentiation.

